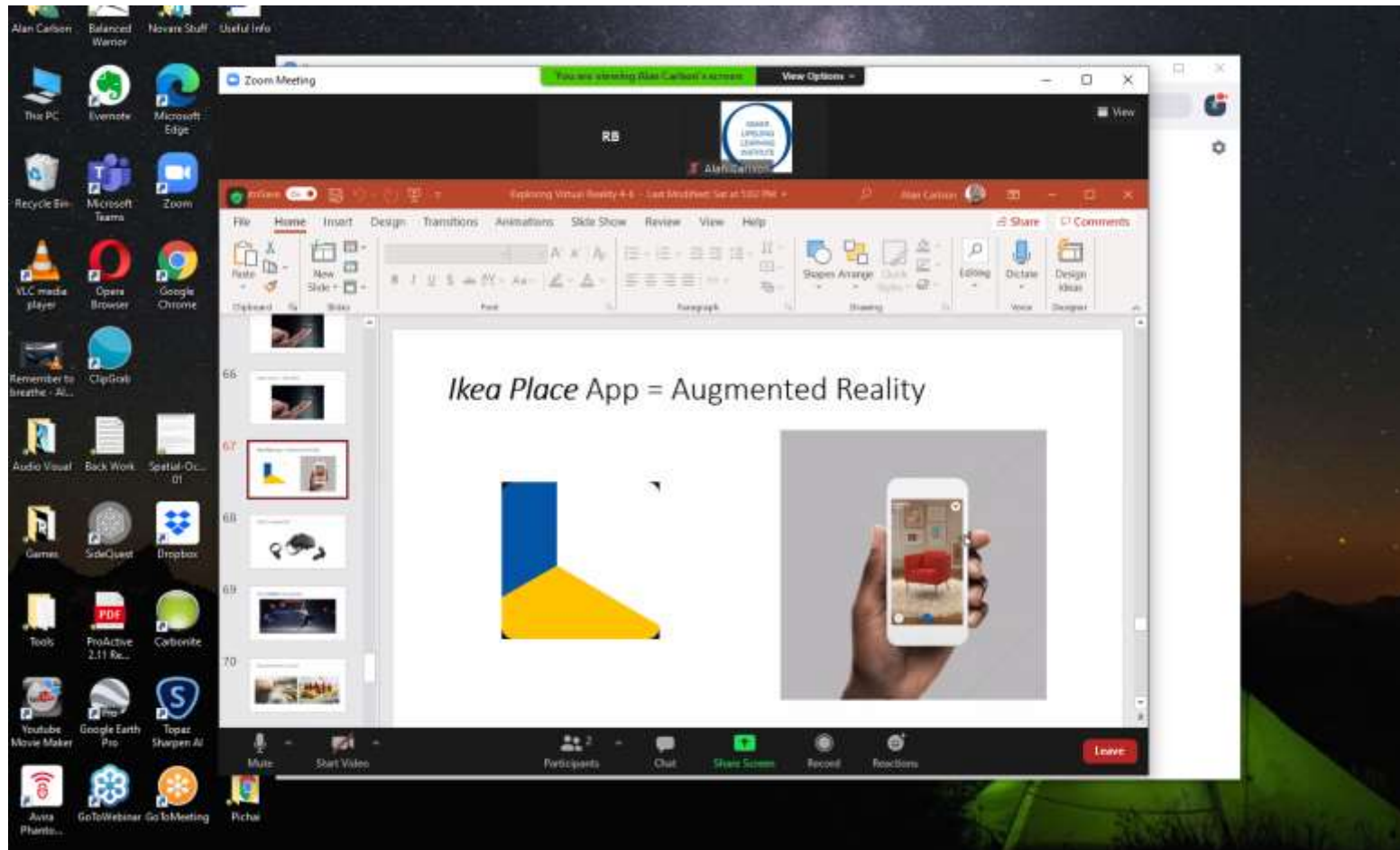
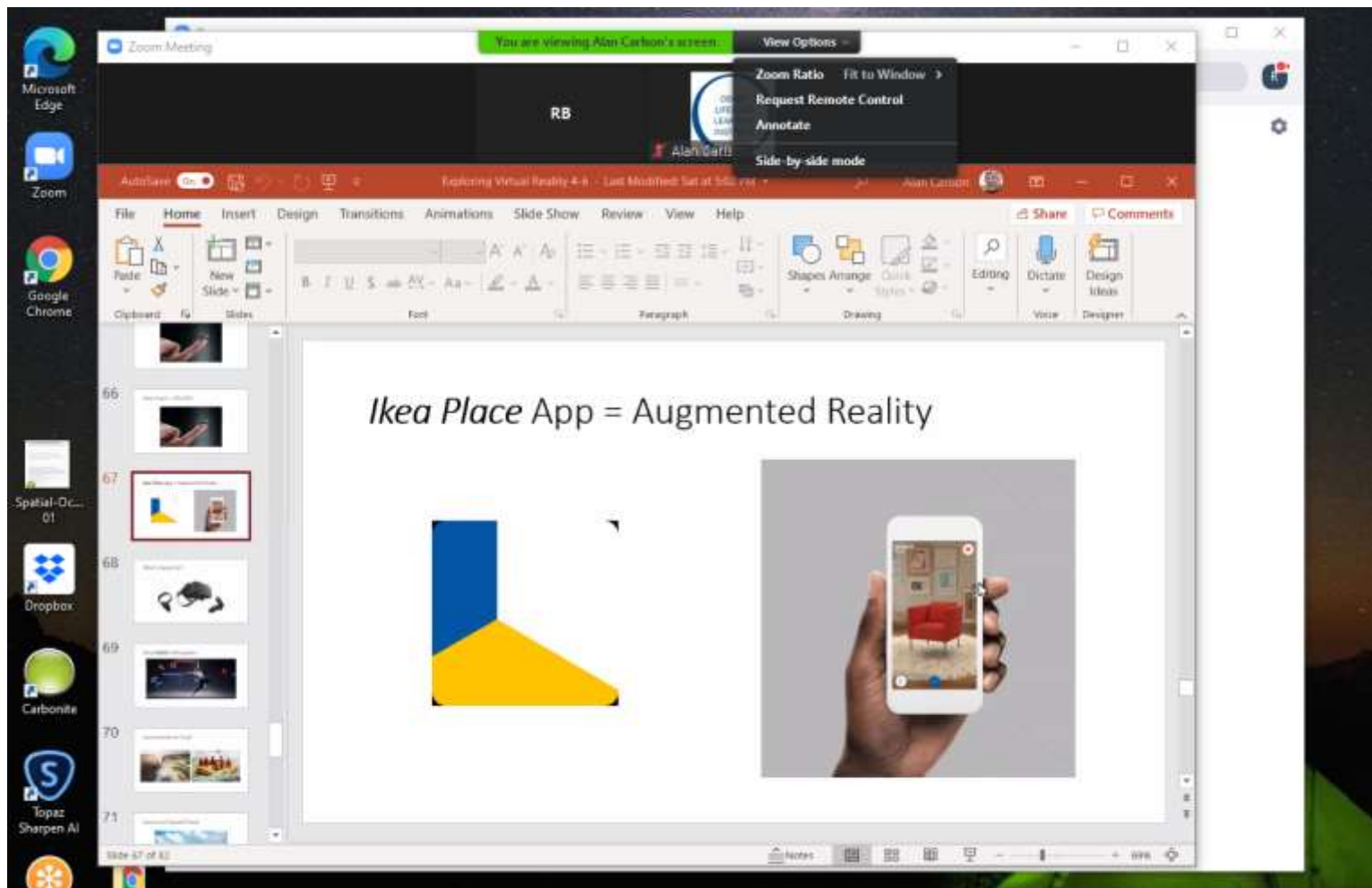


Zoom Ratio

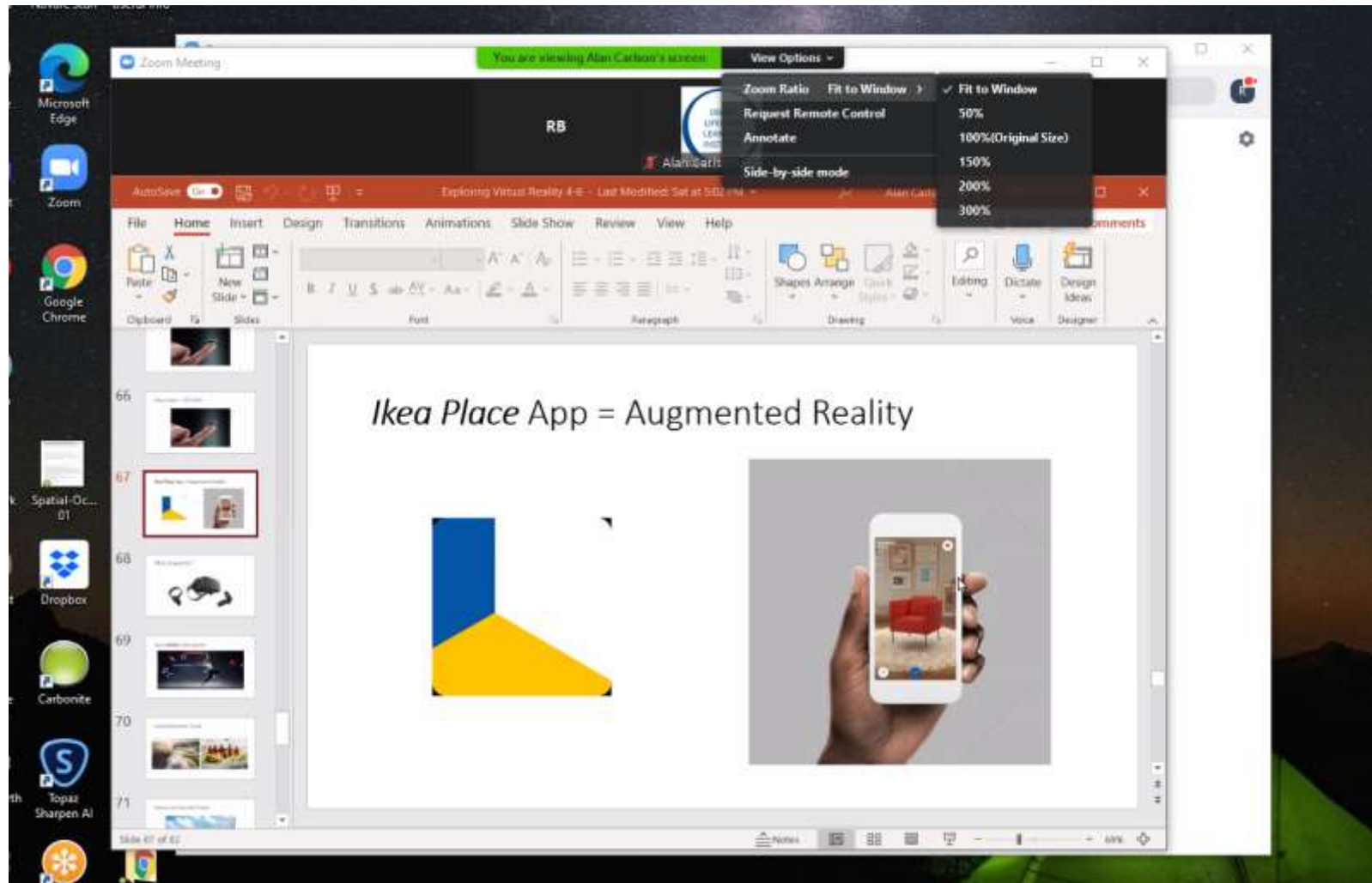
Here is a participant's view of a shared screen. We want a closer look at the image on the right



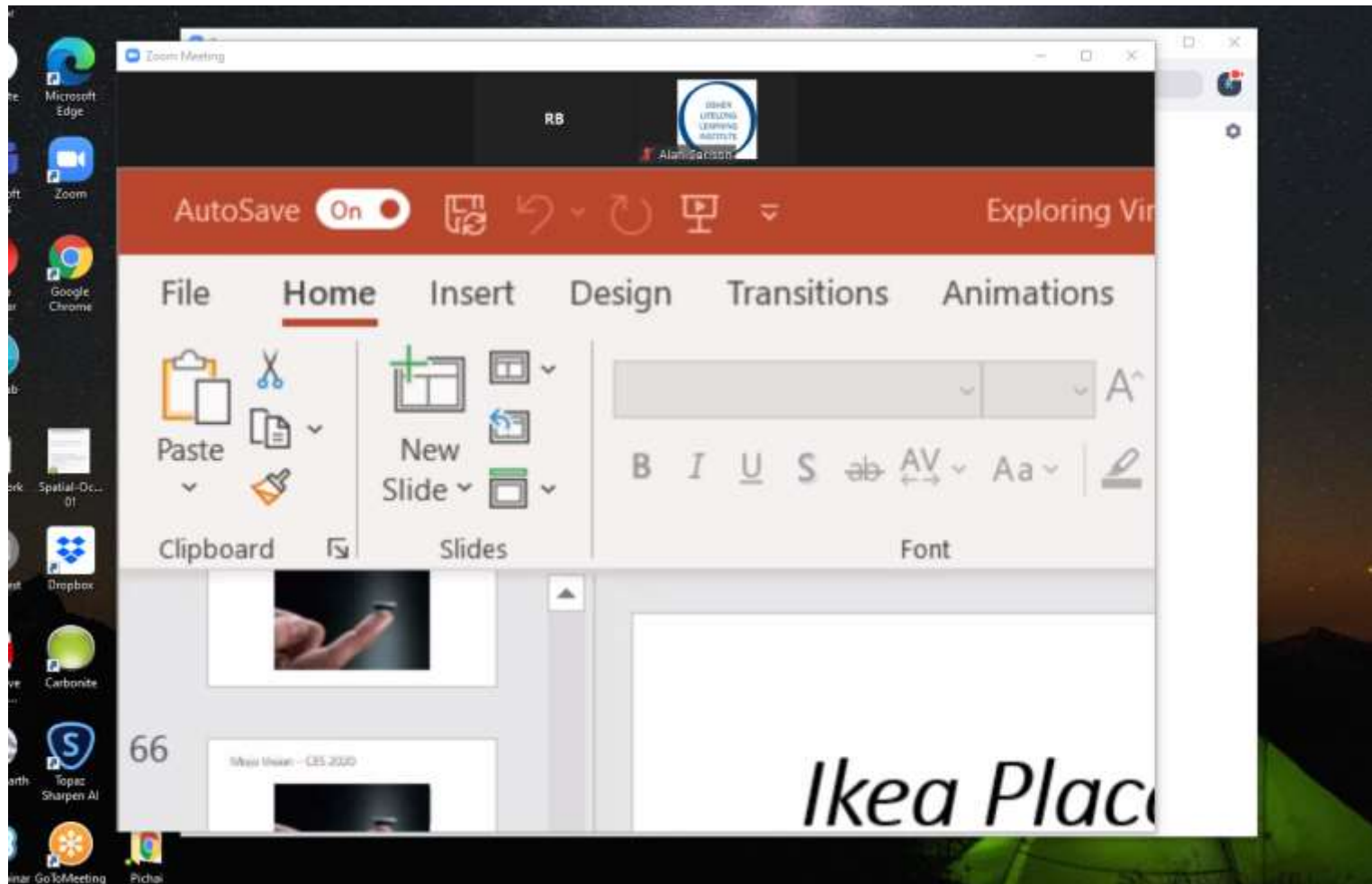
We find “View Options” and click on the downward arrowhead to the right of “Options”



From the drop-down box we choose “Zoom Ratio” which had defaulted to “Fit to Window”



From the choices offered we choose 200%, which produces this view



Our cursor becomes a “hand” with which we can “grab” (Click and hold) the image and drag the portion we want to see into view.

